

# AG GE ND A

GL Generell

IACS/Rules/Conventions

Neubau

Beschichtung/Korrosion

Containerschiffe

Condition Assessment Program (CAP)

## *Bulker*

Besichtigungen

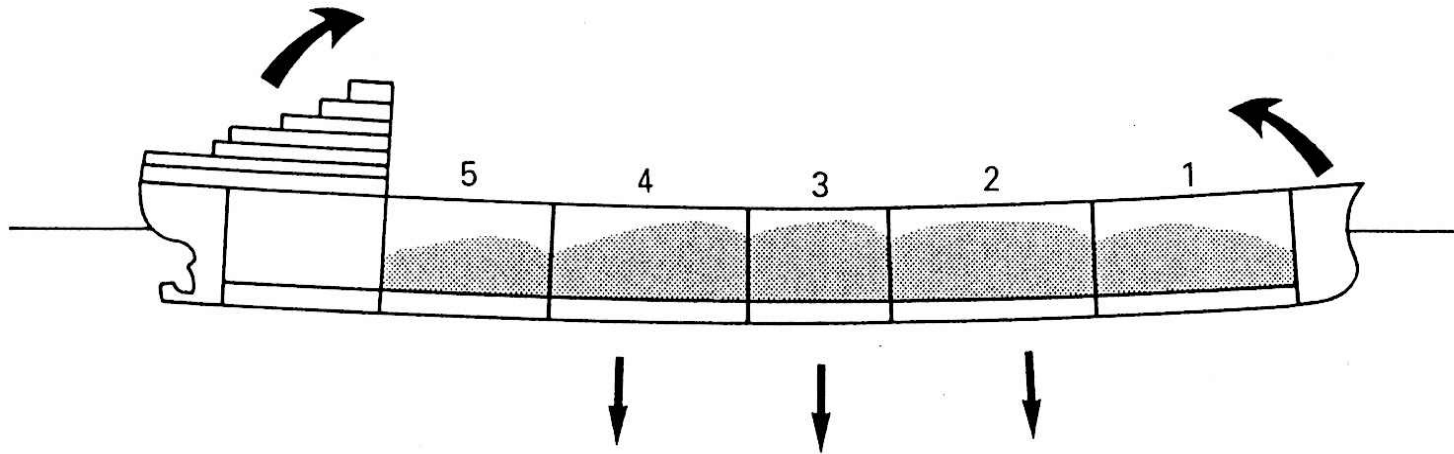
Schäden/Reparaturen

Emergency Response

# *327.000 tdw Bulk Carrier “Peene Ore”*

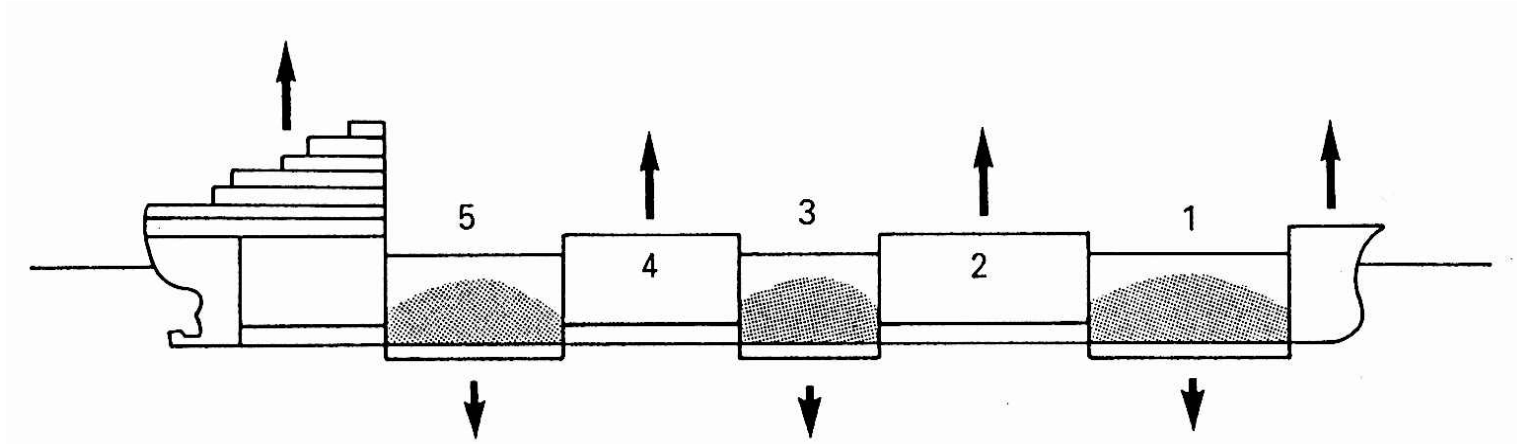


# *Biegung*



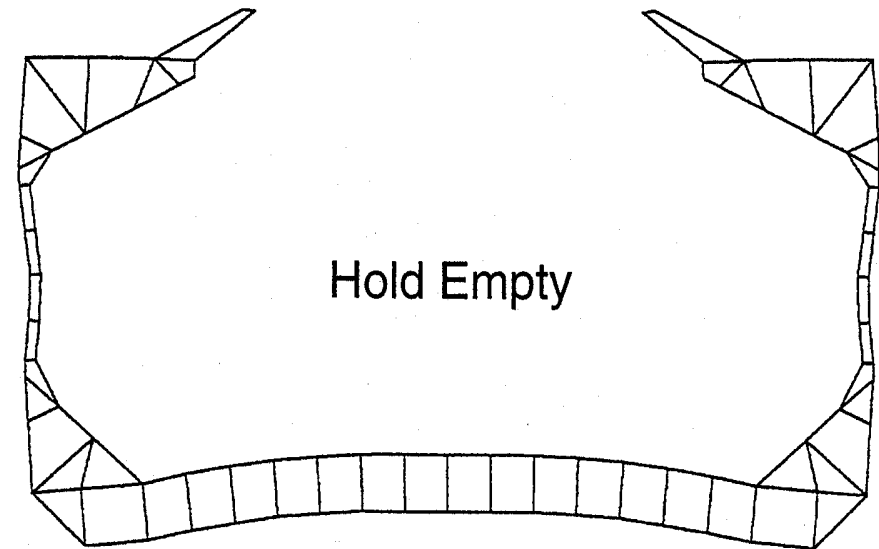
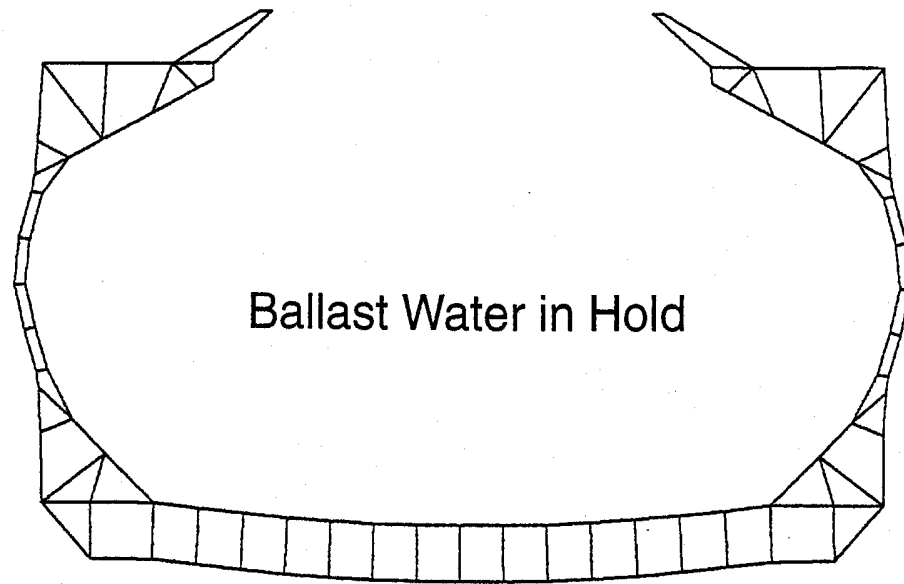
**Bending Moments** are those moments which tend to bend a vessel along its length, causing it to hog or sag. The bending moment at any point along the length of the vessel is equal to the algebraic sum of the moments of all loads acting between that point and one end of the vessel.

# *Scherkräfte*

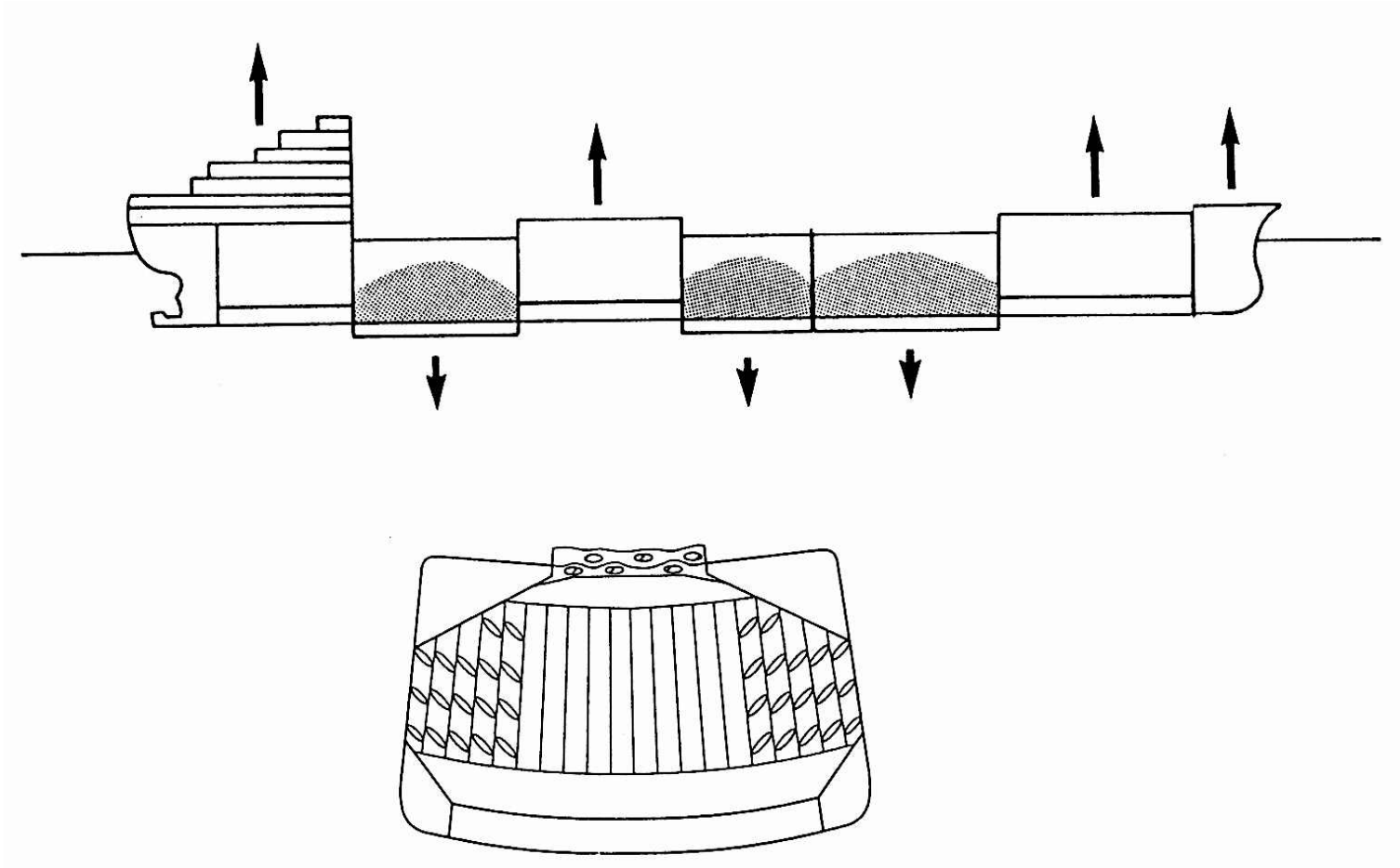


**Shear Forces** are those forces which tend break or shear the vessel across. The vessel is exposed to forces due to the weight of the structure, the weight of the cargo, the forces of buoyancy, and direct hydrostatic pressure. When these forces are not in balance at every point along the length of the vessel shear forces will exist.

# *Load Cases with High Stress Fluctuations in Side Frames*



# *Kräfteüberlagerung*



# *Falsches Be-/Entladen*

