

Schadenverhütungstagung des Fachausschusses  
Transport im GDV vom 14. bis 16. Juni 2004

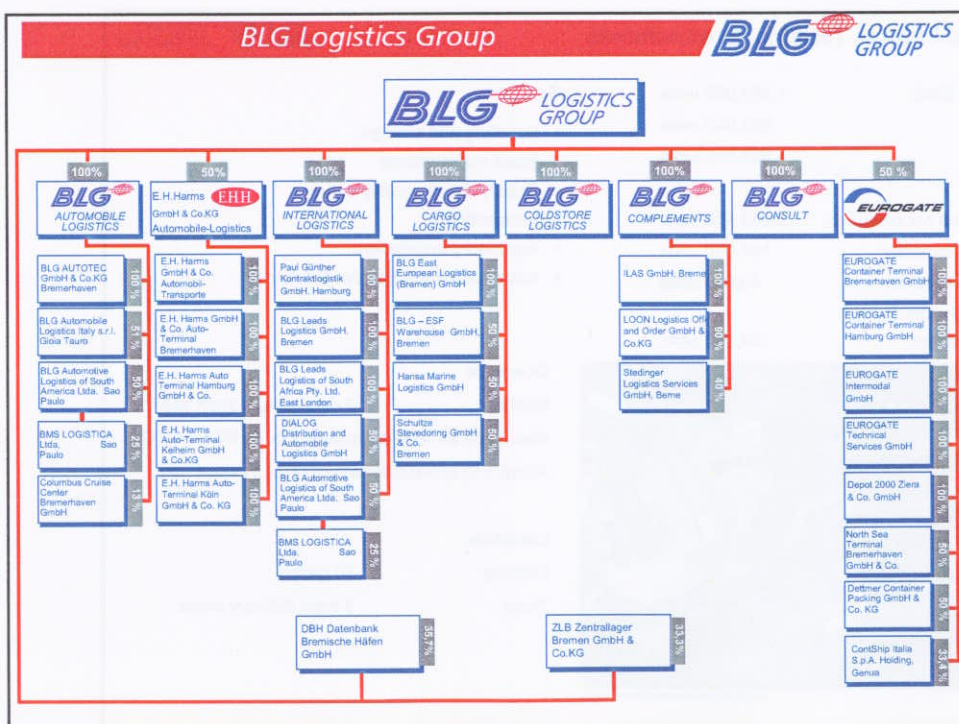
Der Auto- und Ro-Ro-Terminal in Bremerhaven  
(BLG Automobile Logistics, High & Heavy)

Ferdinand Möhring  
BLG Automobile Logistics





**Herzlich Willkommen zur  
GDV Schadenverhütungstagung des  
Fachausschusses Transport  
vom 21. bis 24. September 2003**



## Facts and Figures



<b>Location:</b>	Bremerhaven, Germany	
<b>Managing Directors:</b>	Manfred Kuhr, Bernd Kupke	
<b>Employees:</b>	BLG Automobile Logistics	473 plus dedicated pool
	BLG AutoTec	160
	BLG Automobile Logistics Italia	60
<b>Competences:</b>	Handling of cars and High and Heavy Cargo Development of customer related logistics systems	
<b>Subsidiary of:</b>	BLG Logistics Group AG & Co. KG	
<b>Subsidiaries :</b>	BLG Automobile Logistics Italia S.r.l., BLG AutoTec GmbH & Co., BLG Automotive Logistics of South America Ltda.	

## Facts and Figures Terminal Bremerhaven



Volume 2002:	1,383,000 units
Export	855,000 units
Import	528,000 units
Total area (incl. warehouses):	2,082,488 sqm
Storage capacity:	100,000 units
Thereof covered :	40,000 units
PDI Technical Center BLG AutoTec	154,000 sqm

### Services

- Handling and storage
- Stock maintenance
- Quality check, quality survey
- Forwarding
- Accessory installation
- Advanced administrative functions



Overview RoRo-Terminal Bremerhaven

### Quayside

Berths: 9 deep sea, 5 short sea  
About 880 arrivals/departures p.a. by PCC/PCTC  
About 510 arrivals/departures p.a. by short sea

### Landside

Railway: 10 ramps  
Truck: 3 main delivery areas

Terminal Bremerhaven



Section Nordhafen





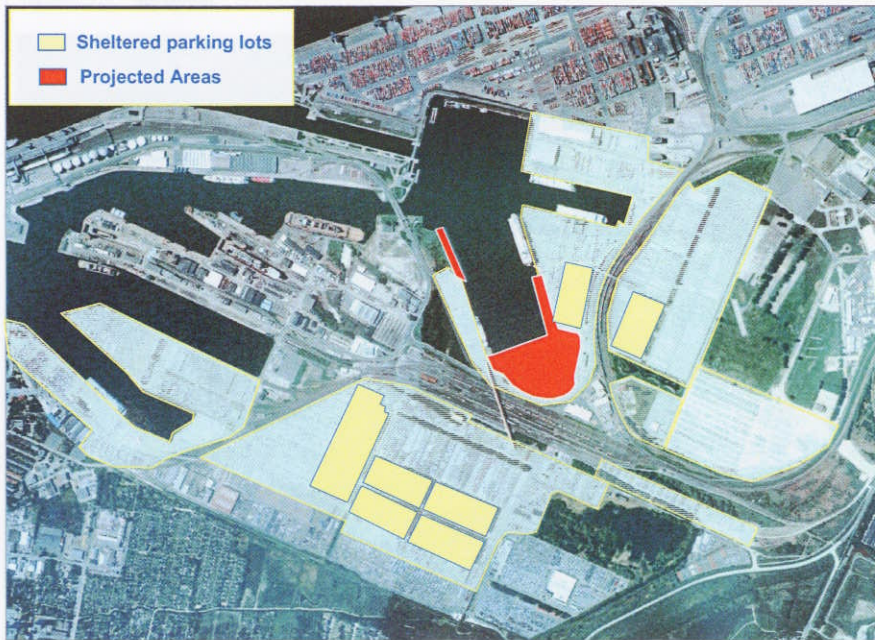
Section Kaiserhafen



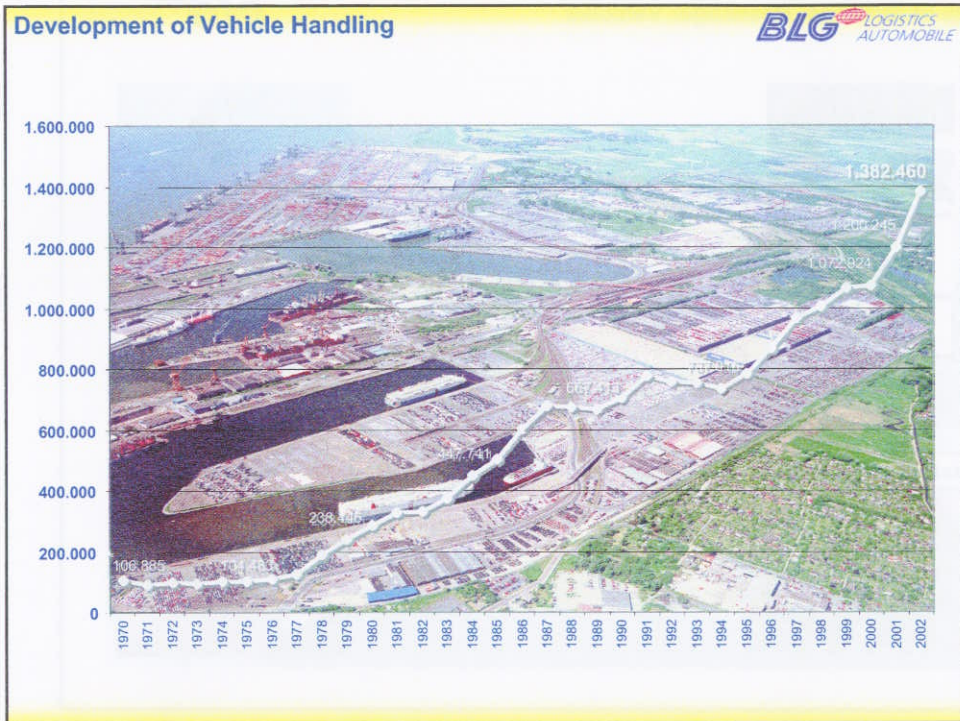




Facts and Figures







### Range of Services


BLG LOGISTICS AUTOMOBILE

#### Passenger Vehicles

#### High & Heavy Cargo

**Range of Services- Passenger Vehicles**

**BLG LOGISTICS AUTOMOBILE**



**Handling and Stockkeeping**

**Stock Maintenance / Washing**

**Supported by enhanced standardised IT-Systems**

**Accessory Installation**

**Forwarding and Transportation Department**

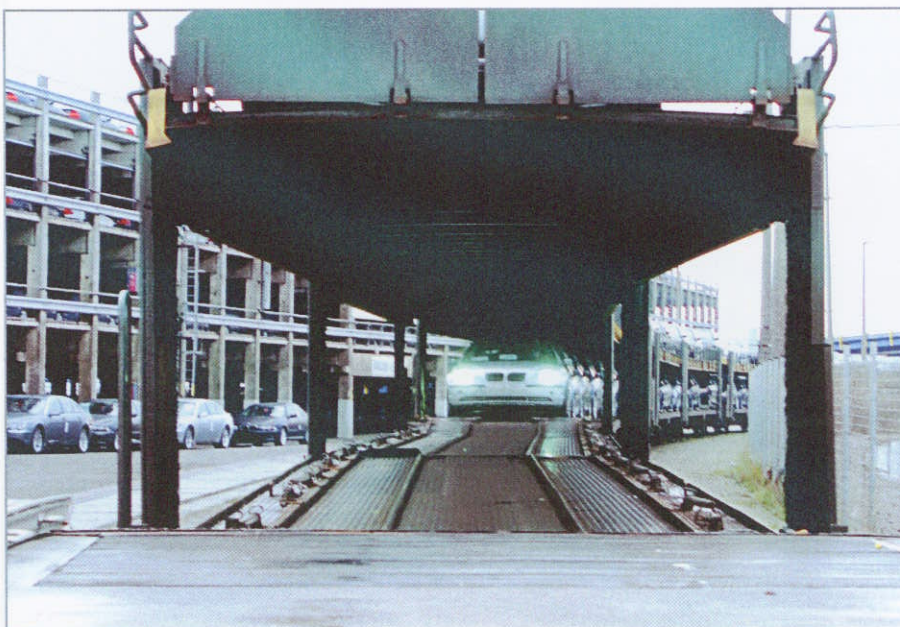
**BLG LOGISTICS AUTOMOBILE**



BLG LOGISTICS  
AUTOMOBILE



BLG LOGISTICS  
AUTOMOBILE







### Range of Services - High & Heavy



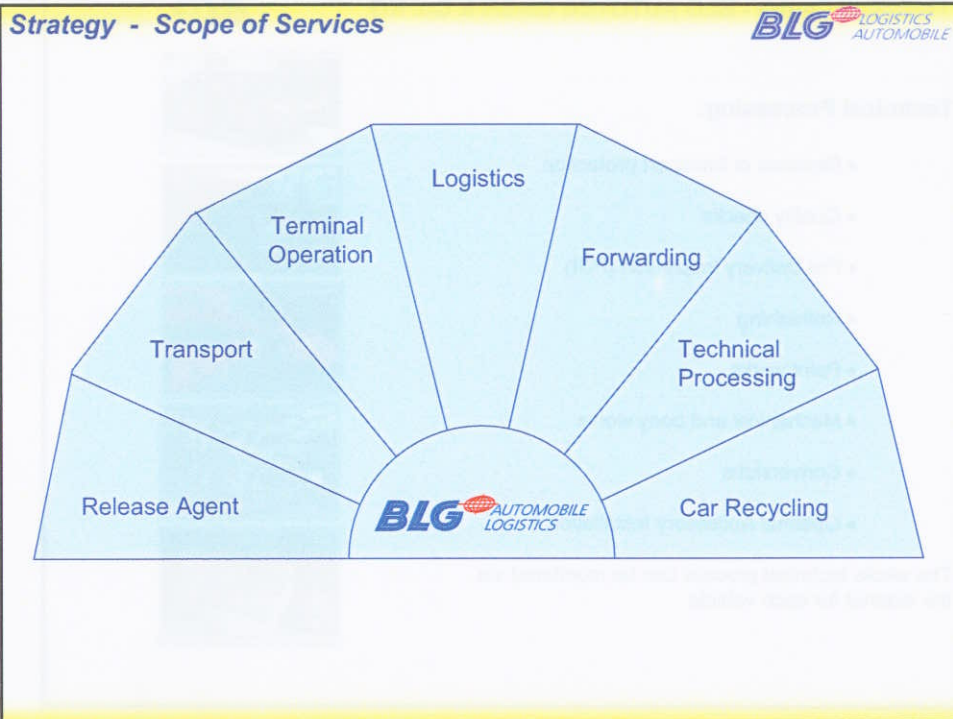
- Handling of trucks, busses, boats, agricultural machines, military equipment
- Handling of high and heavy goods
  - by forklift up to 37 tons
  - on Service Mafi-Trailer up to 60 tons
  - on Mafi-Trailer up to 150 tons
  - by mobile cranes up to 400 tons
  - by floating cranes up to 650 tons
- Handling of containers
- Sheltered storage of non weatherproofed goods up to 23,000 sqm
- Providing sufficient handling and storage areas
  - directly linked to motorway
  - rail track at handling area











**PDI Technical Centre - BLG AUTOTEC GmbH & Co. KG**

Total area	154,000 sqm
storage capacity	10,000 units
thereof	
four block of stock	5,100 units
single access	4,900 units

**PDI Technical Centre - BLG AUTOTEC GmbH & Co. KG** **BLG** LOGISTICS AUTOMOBILE

**Technical Processing:**

- Removal of transport protection
- Quality checks
- Pre Delivery Inspection (PDI)
- Refreshing
- Paint works
- Mechanical and body works
- Conversions
- Optional Accessory Installation

The whole technical process can be monitored via the internet for each vehicle

**Target Markets** **BLG** LOGISTICS AUTOMOBILE

**Western and North-Eastern Europe**

**Southern and South-Eastern Europe**

**North Africa**



**BLG**  *LOGISTICS  
AUTOMOBILE*

**Vielen Dank für Ihre Aufmerksamkeit!!!**

