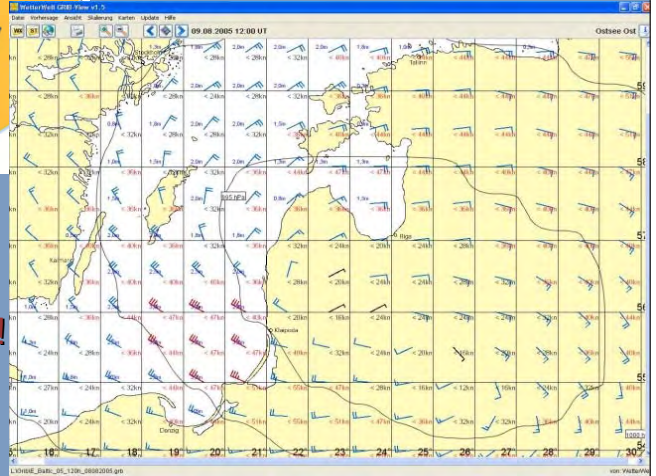


# Wettersoftware



GRIB-Daten WetterWelt  
in sehr hoher Auflösung:

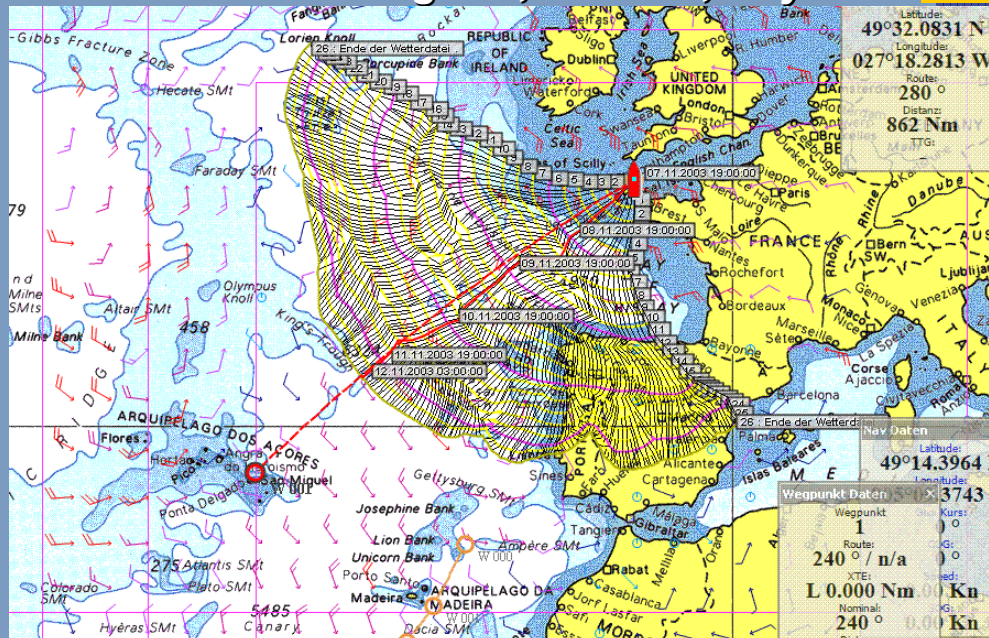
- ▶ 30 sm bis 0.6 sm (=1km!)
- ▶ 3 h bis 30 Minuten

sonst üblich: 60sm / 3-6h

# Navigationssoftware

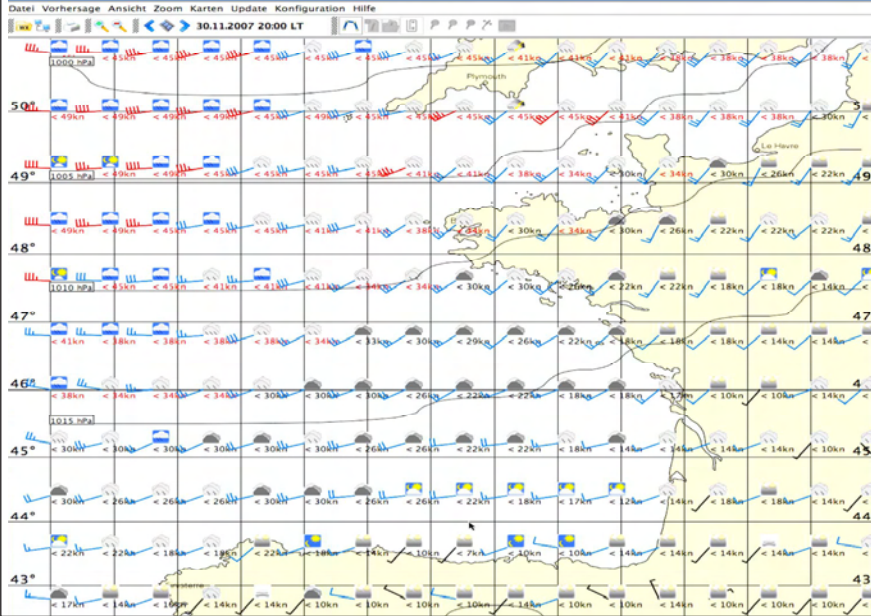


z.B. Offshore Navigator, MaxSea, Raytec



# Wettersoftware

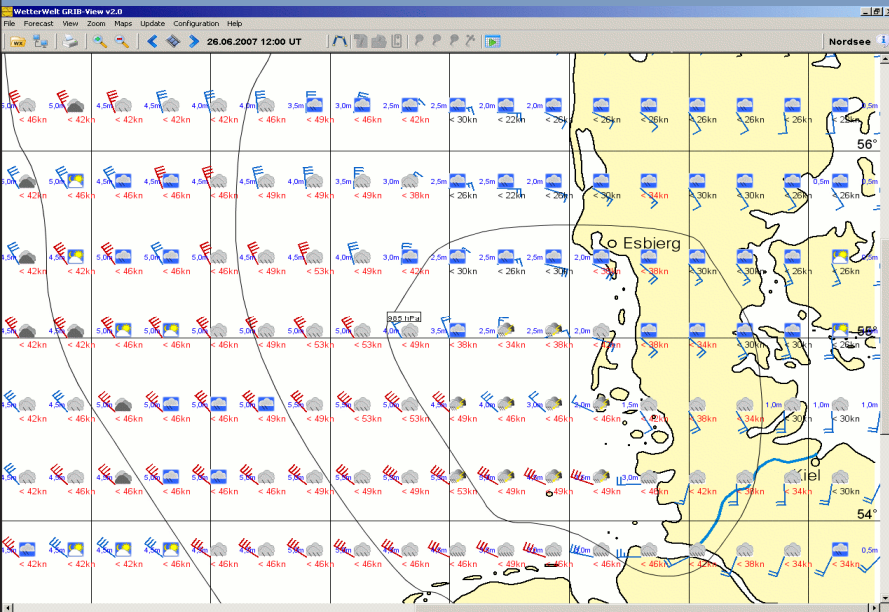
## WetterWelt GRIB-View 2.0



Vorhersage  
für  
**HEUTE 30.11.**

# Wettersoftware

## WetterWelt GRIB-View 2.0

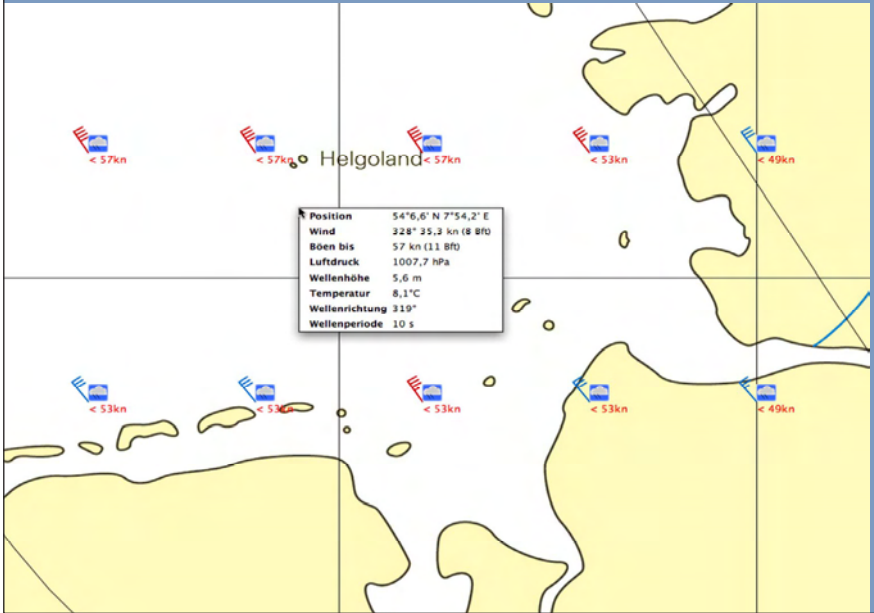


*Cruising  
Plus:*

- Wind
- Böen
- Luftdruck
- Windsee
- Dünung
- Periode
- Temperatur
- WETTER**

# Wettersoftware

## WetterWelt GRIB-View 2.0

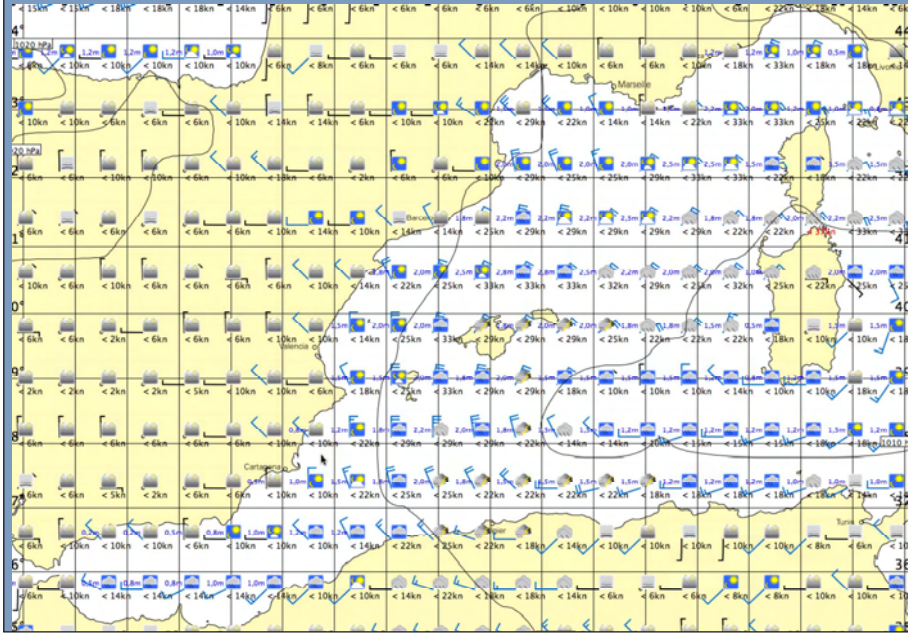


Bestmögliche Genauigkeit

Angaben für jede Position

# Wettersoftware

## WetterWelt GRIB-View 2.0



weltweit

hier: Mittelmeer